



## 2900 EAST CLIFF DR

SANTA CRUZ, CALIFORNIA

### CONTEMPORARY OCEANFRONT RETREAT

\$13,995,000

[SantaCruzMasterpiece.com](http://SantaCruzMasterpiece.com)



#### SCAN ME

Hold up your phone's camera to visit the property's website.

Experience unparalleled coastal living in this one-of-a-kind contemporary oceanfront home, set on over 500 feet of beachfront with stunning 240° views through expansive floor-to-ceiling windows. Fully remodeled, this luxury retreat is among Santa Cruz's most exceptional properties. Located on a ~¾ acre private point, it offers dramatic views of the beach and lighthouse from nearly every room. The open layout includes a chef's kitchen, an atrium-style game room that opens to an outdoor BBQ area, and a relaxing ocean-view hot tub. Each bedroom features its own en-suite bath and breathtaking surf views. A separate lower-level suite with private entry, kitchen, living room, bedroom, and bath offers flexible living or guest quarters. Enjoy your own sandy beach area, with a gated path providing direct access to the public beach. Just a short beach stroll to the harbor, this rare gem blends privacy, luxury, and location into the ultimate Santa Cruz lifestyle.



**COLDWELL  
BANKER**

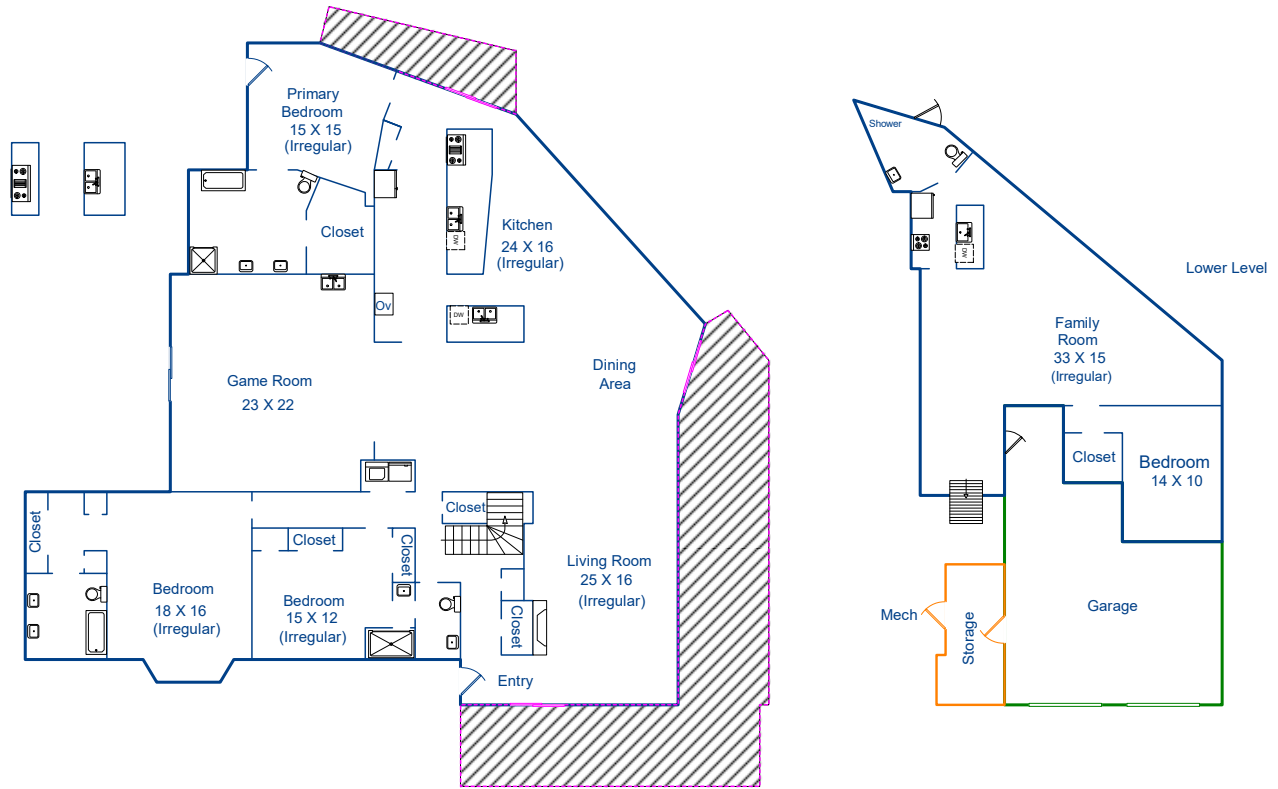
831.214.1990 | DRE#00891159  
[TimAllenProperties.com](http://TimAllenProperties.com)  
[Team@TimAllenProperties.com](mailto:Team@TimAllenProperties.com)



**TIM ALLEN**  
 PROPERTIES TEAM

The property information herein is derived from various sources that may include, but not be limited to, county records and the Multiple Listing Service, and it may include approximations. Although the information is believed to be accurate, it is not warranted and you should not rely upon it without personal verification. ©2024 Coldwell Banker. All Rights Reserved. Coldwell Banker and the Coldwell Banker logos are trademarks of Coldwell Banker Real Estate LLC. The Coldwell Banker® System is comprised of company owned offices which are owned by a subsidiary of Anywhere Advisors LLC and franchised offices which are independently owned and operated. The Coldwell Banker System fully supports the principles of the Fair Housing Act and the Equal Opportunity Act.

# FLOOR PLAN



## MAIN LEVEL

3,720 SqFt

## TOTAL LIVING AREA

4,715 SqFt

## LOWER LEVEL

995 SqFt

## GARAGE

572 SqFt

This model is for use as a visual tool only. Some measurements are estimates. Therefore, no appraisal value should be inferred.

# SPECIFICS



4 Bedrooms



4 Bathrooms



4,715 SqFt



0.69 Acres

Interior: ..... Plaster

Exterior: ..... Stucco

Fireplace: ..... 1

Heat: ..... Forced Air, Gas

Floors: ..... Tile, Carpet

Roof: ..... PVC

Garage: ..... 2-Car

Year Built: ..... 1952

**2% Buyers Brokerage Compensation** | Brokerage Compensation not binding unless confirmed by separate agreement among applicable parties.